

Whether you are planning a lavish wedding party or an intimate occasion, we have a range of elegant rooms to suit the size and style of your wedding.

The Ballroom

The grand Victorian ballroom has stunning sea views through its floor-to-ceiling windows. With capacity for up to 200 guests for a civil wedding ceremony, and a maximum of 250 for an evening reception (depending on the time of year), this magnificent venue can also be modified to a smaller size, seating up to 110 for the service.

The Fistral Suite

With one of its sides facing Fistral Beach, this opulent suite offers stunning views of the present day and a glimpse into the history

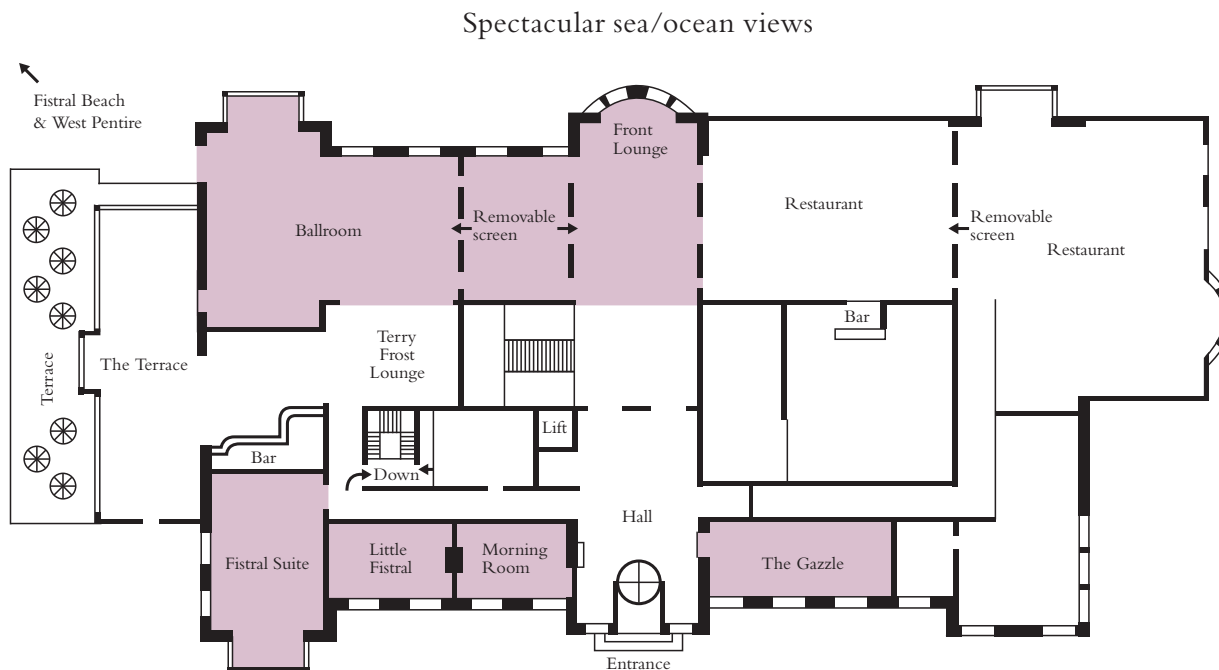
of the Headland through photographs of the past. Up to 50 guests can be accommodated, and the Fistral Suite is easily adapted to cater for a wedding breakfast or evening entertainment. Candles and a log fire can create the ultimate venue for a romantic winter wedding.

The Little Fistral and The Morning Room

These two beautifully appointed rooms make the perfect venues for intimate weddings. Both rooms have fireplaces and can accommodate up to 12 people for a civil ceremony.

The Gazzle

A charming room ideal for weddings of up to 30 guests, The Gazzle is an elegant suite with views of the hotel's front grounds.



INVESTOR IN PEOPLE